

Upper Kickapoo River Map and Information
Kickapoo River - Ontario to La Farge
Vernon County, Wisconsin

Updated July 2024

Information Kiosk
 Information Kiosk

Kickapoo Valley Reserve
 Kickapoo Valley Reserve

Wildcat Mountain State Park
 Wildcat Mountain State Park

Recommended River Campsites

- Trail/River Access
- Vehicle Access

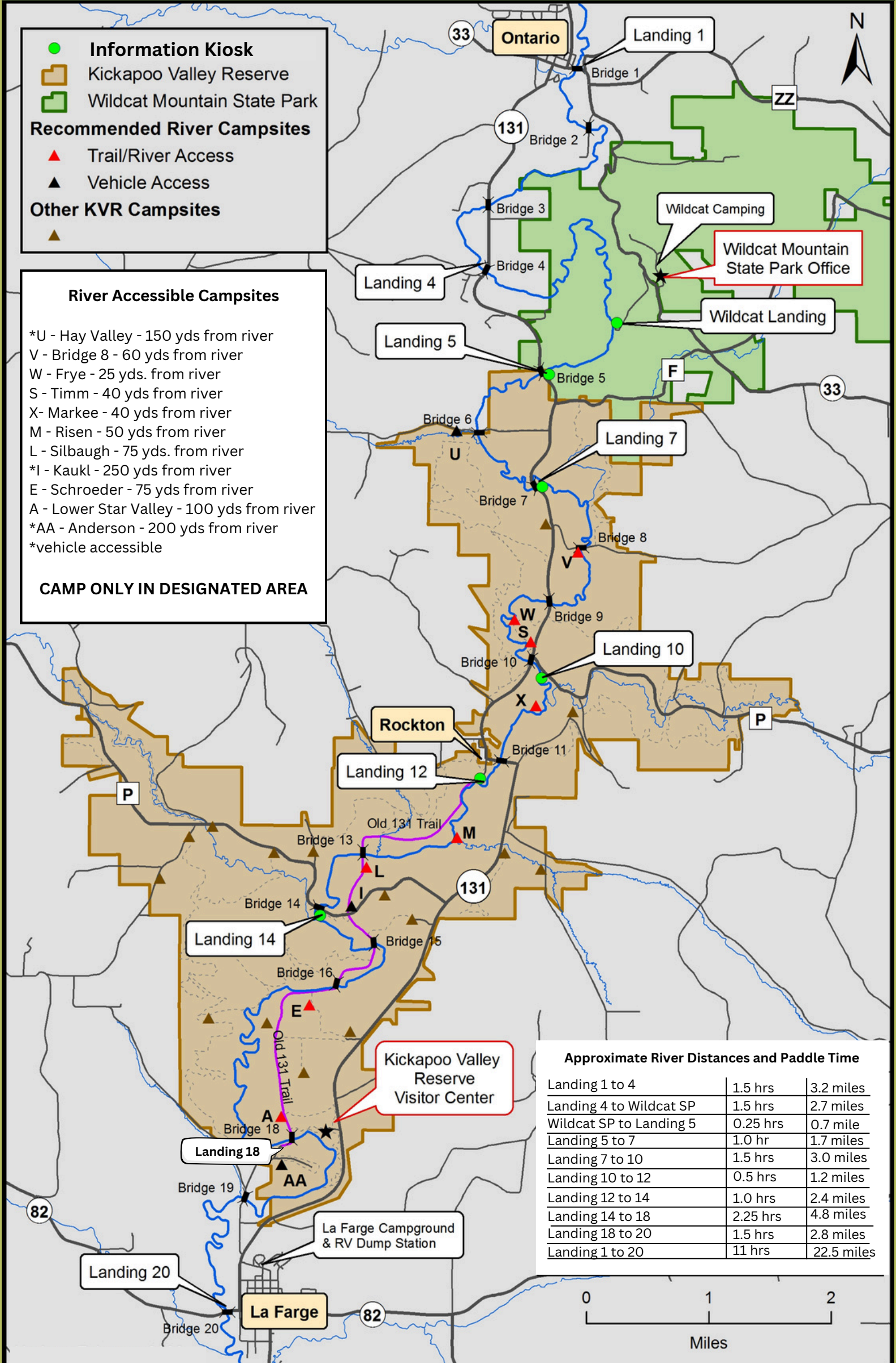
Other KVR Campsites

River Accessible Campsites

- *U - Hay Valley - 150 yds from river
- V - Bridge 8 - 60 yds from river
- W - Frye - 25 yds. from river
- S - Timm - 40 yds from river
- X- Markee - 40 yds from river
- M - Risen - 50 yds from river
- L - Silbaugh - 75 yds. from river
- *I- Kaukl - 250 yds from river
- E - Schroeder - 75 yds from river
- A - Lower Star Valley - 100 yds from river
- *AA - Anderson - 200 yds from river

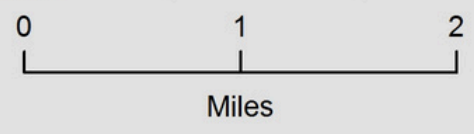
*vehicle accessible

CAMP ONLY IN DESIGNATED AREA



Approximate River Distances and Paddle Time

Landing 1 to 4	1.5 hrs	3.2 miles
Landing 4 to Wildcat SP	1.5 hrs	2.7 miles
Wildcat SP to Landing 5	0.25 hrs	0.7 mile
Landing 5 to 7	1.0 hr	1.7 miles
Landing 7 to 10	1.5 hrs	3.0 miles
Landing 10 to 12	0.5 hrs	1.2 miles
Landing 12 to 14	1.0 hrs	2.4 miles
Landing 14 to 18	2.25 hrs	4.8 miles
Landing 18 to 20	1.5 hrs	2.8 miles
Landing 1 to 20	11 hrs	22.5 miles



NO GLASS



ON RIVER

KB1.07(2), Wis. Admin. Code.
\$150 fine



Kickapoo Valley Reserve
Parking Permit
Required at
Landings
5, 7, 10, 12, 14 & 18
Purchase online or
at the Visitor
Center
kvr.state.wi.us

Be River Ready

- Seek shelter and high ground if severe weather occurs. Be aware the Kickapoo is susceptible to flash flooding. Check the real-time USGS gauging station for Ontario and La Farge at <http://waterdata.usgs.gov/nwis>
- The Kickapoo River flows North to South; bridges and access points are labeled with numbers from Ontario (Landing 1) to La Farge (Landing 20). Important to know your start and end points.
- State law requires Personal Flotation Devices (PFDs) for each person; 13 years old's and younger must wear a PFD.
- Use caution while swimming due to river current, snags and cold-water temperatures. Wear strap sandals or tennis shoes to protect feet from sharp objects.
- State Park sticker is required if parking in Wildcat Mountain State Park (WSP); Visitor or Parking permit required at all of the KVR landings – all proceeds are used to take care of the river access sites.
- Designated campsites along the river are limited and only available to registered guests; book sites online up to 45 days in advance, reserve a site at WSP, or utilize private or Village campgrounds.
- Bring plenty of drinking water or be prepared to filter or boil water due to naturally occurring bacteria.
- No litter or glass on the river; punishable by \$150 fine. Pack out all trash. Be courteous to fellow paddlers; keep noise to a minimum and ethics to a premium.

EMERGENCY ALERT SYSTEM
Includes Kickapoo River severe condition alerts

TEXT
54639 La Farge TO 54651 Ontario
888777
For Emergency Dial 911

Standard text messaging rates apply. Opt out at any time

Trail & River Information kickapoovalley.wi.gov

Take all trash WITH YOU!

PACK IT OUT

More Information

The Kickapoo River is the only river that starts and ends in the Driftless Region and is a great example of the dendritic system with many streams emptying into the main stem. The shallow, gently flowing river is tame enough for the beginner but scenic enough for the advanced paddler as well. The upper stretch of the river from Ontario to La Farge is arguably the most beautiful, if not the most accessible for the public to enjoy.

Local Information:

- Canoe/Kayak rental and shuttle services available: Search “Kickapoo River Canoeing” for more information.
 - Village of Ontario <https://ontariowi.com/ontario/>
 - Village of La Farge <https://www.lafarge-wisconsin.com/>
- Stay safe and enjoy your trip!

Kickapoo Valley Reserve
S3661 State Road 131
La Farge, Wisconsin 54639
608/625-2960
kickapoo.reserve@krm.state.wi.us
kickapoovalley.wi.gov

Wildcat Mountain State Park
E13660 State Road 33
Ontario, Wisconsin 54651
608/337-4775
dnr.wi.gov/topic/parks/name/wildcat

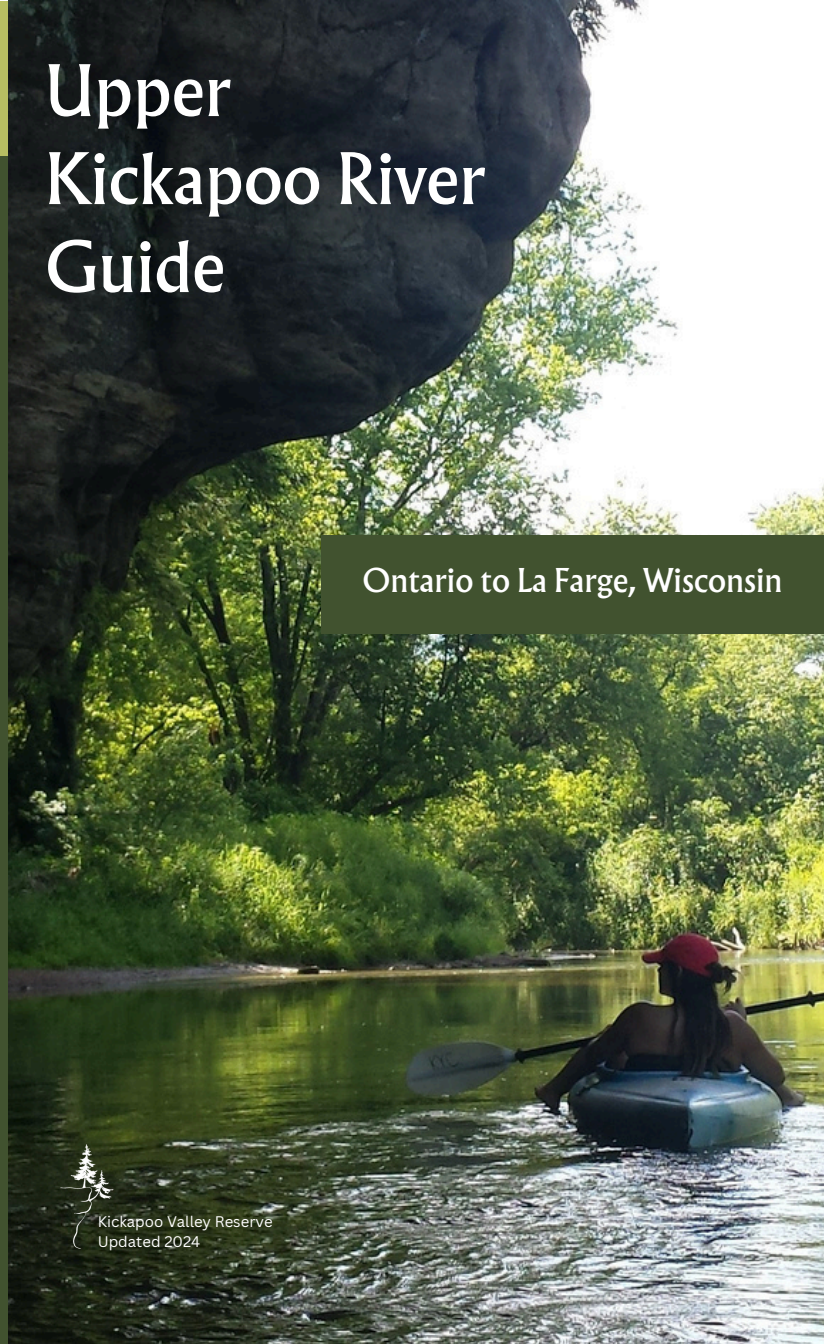



KVR Website

This brochure is printed on recycled paper.
Be GREEN!! Take a photo of this brochure instead!

Upper Kickapoo River Guide

Ontario to La Farge, Wisconsin



 Kickapoo Valley Reserve
Updated 2024